

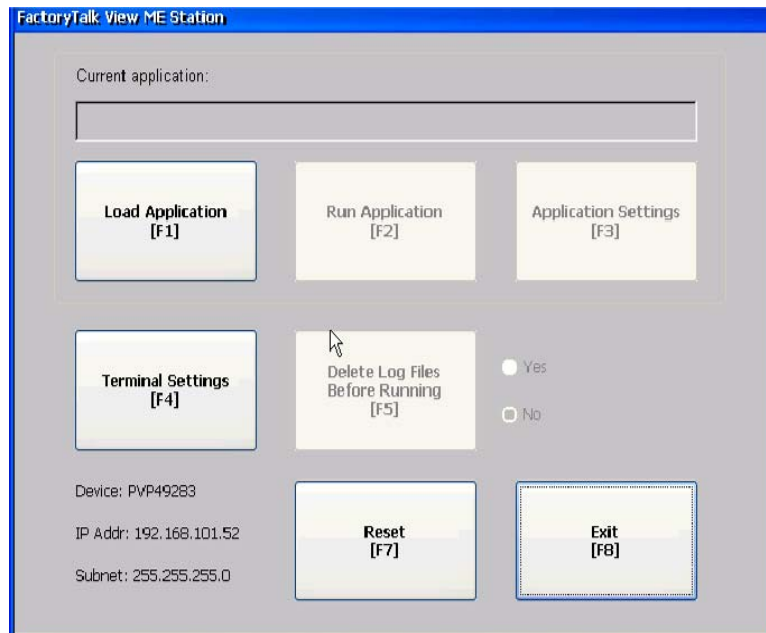
## New PanelView Plus 6 Graphic Terminal Out of Box Setup



**How do you know if you have a PanelView Plus or a Panelview Plus 6?** The quickest way is to look at the type of memory slot the unit has on the back. If it accepts an 'SD Card', it's a PanelView Plus 6. If it accepts a 'Compact Flash Card', it's a PanelView Plus or VersaView refer to (Service Bulletin 2006-04).

To determine firmware, just watch the unit boot up. In the box labeled APP you will find the firmware version, ie 06.10. For this procedure, you want Firmware 6.10 or later loaded on a PanelView Plus 6.

1. The first time you start the system, the terminal goes through its power-up sequence and launches FactoryTalk View ME Station, the Configuration mode of the terminal.

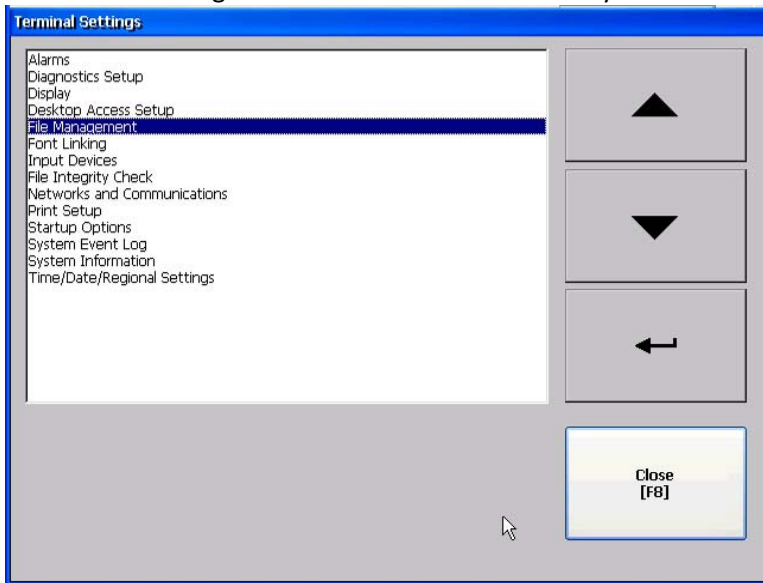


2. Insert Secure Digital (SD) card (01659-000017) into SD slot that is hot-swappable on the back of the display unit.
3. Next, Touch "Terminal Settings (F4)"

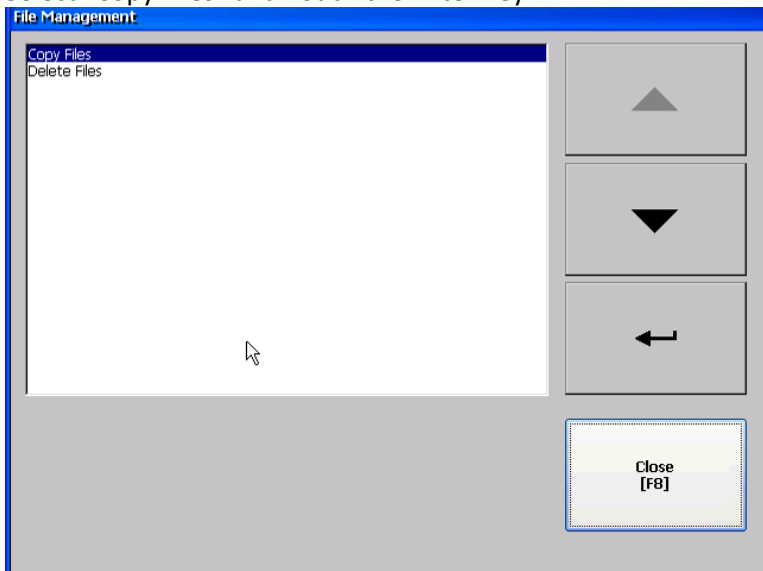
### **COPY FILE FROM SD CARD TO DISPLAY**

## New PanelView Plus 6 Graphic Terminal Out of Box Setup

4. Select "File Management" and Touch the Enter Key

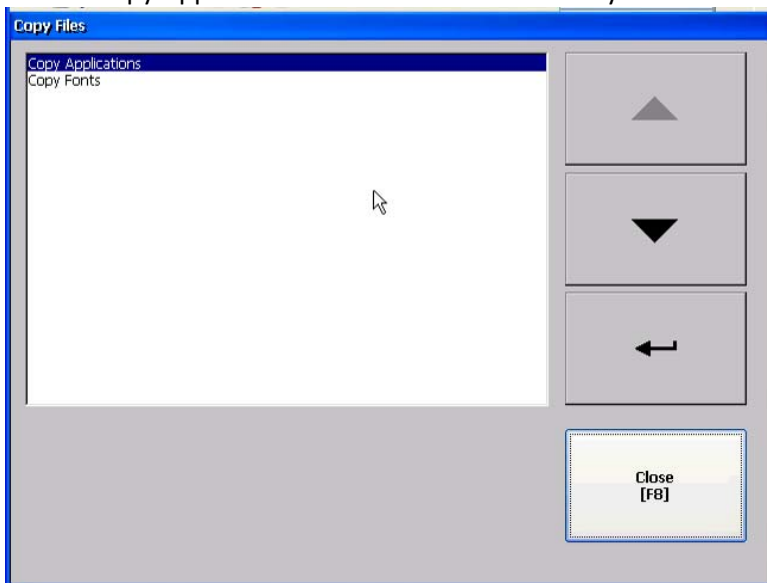


5. Select "Copy Files" and Touch the Enter Key

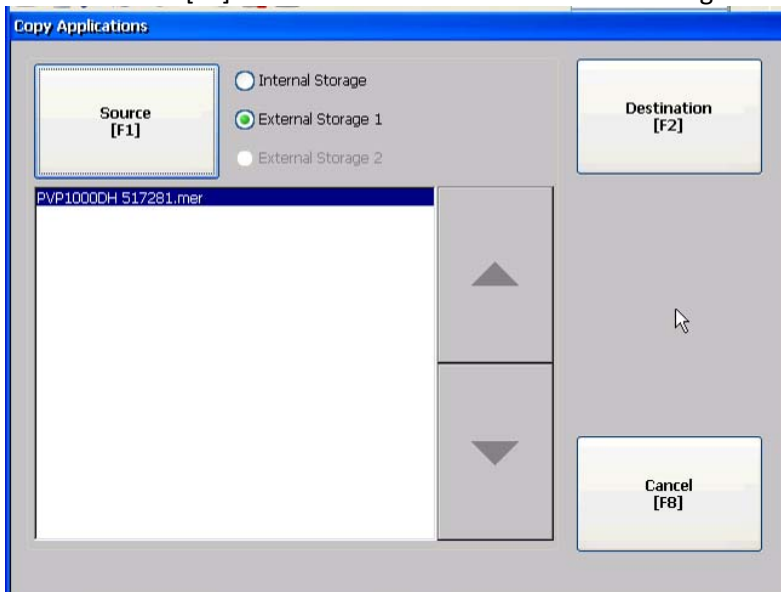


## New PanelView Plus 6 Graphic Terminal Out of Box Setup

6. Select “Copy Applications” and Touch the Enter Key



7. Touch “Source [F1]” to select radial button “External Storage 1”

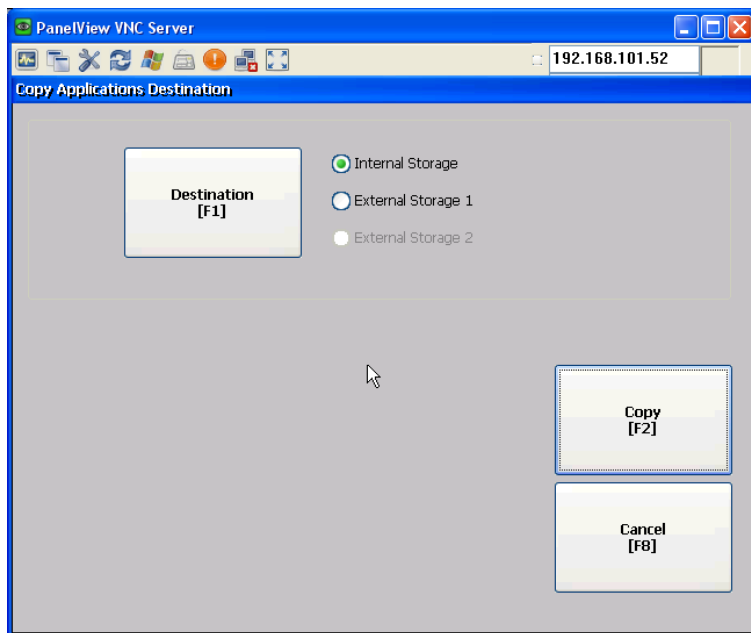


Then, highlight the mer file to be copied from the “External Storage 1”. (If the mer file was not copied onto the SD Card into the proper directory, it will not show up for selection. As an example assuming the application file is 517281.mer is already copied to the SD Card, when viewing the card on a regular computer with windows explorer, you would see (assuming the SD card is mapped to E drive):

**E:\Rockwell Software\RSViewME\Runtime\517281.mer**

## New PanelView Plus 6 Graphic Terminal Out of Box Setup

8. Touch "Destination [F2]"






9. The radial button for "Internal Storage" should already be selected.
10. Touch "Copy [F2]" to copy the file from "External storage 1" to the Internal Storage" location.
11. Touch "Cancel [F8]"
12. Touch "Close [F8]"
13. Touch "Close [F8]"
14. Touch "Close [F8]"
15. Touch "Load Application [F1]"  
The radial button for "Internal Storage" should already be selected.
16. Highlight the internal mer application file that you want to load
17. Touch "Load [F2]"
18. Question is displayed, "Do you want to replace the terminal's current communication configuration with the application's communication configuration?"


Touch "Yes [F7]"

19. Touch "Terminal Settings [F4]"

### SET IP ADDRESS

20. Arrow down to "Networks and Communications" and Touch the Enter Key 
21. Select "Network Connections" and Touch the Enter Key 
22. Arrow down to "Network Adaptors" and Touch the Enter Key 
23. KS88411; Micrel KS8841Ethernet Driver should be highlighted. Touch IP Address [F2]
24. Touch "Use DHCP [F4]"; Radial button should move from "Yes" to "No"

## New PanelView Plus 6 Graphic Terminal Out of Box Setup

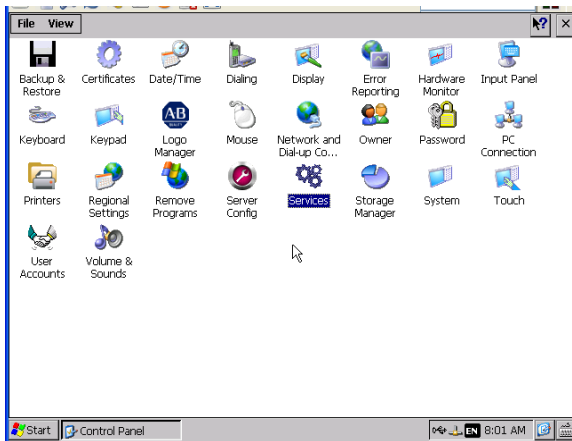
25. Touch "IP Address [F1]"
26. For Block Machine select 192.168.101.(?) where ?=Enter number for piece of equipment this screen belongs to
  - 32=Batching
  - 52=Block Machine
  - 92=Loader/Unloader
  - 132=Rack Transporter
  - 172=Cuber One
  - 173=Cuber Two
27. Touch "Enter"
28. Touch "Subnet Mask [F2]"
29. select 255.255.255.0
30. Touch "Enter"
31. Touch "OK [F7]"
32. Touch "OK [F7]"
33. Touch "Close [F8]"
34. Touch "Close [F8]"
35. Touch "Close [F8]"
36. Arrow Down to "Startup Options" and Touch the Enter Key 
37. Touch "On Startup [F1]". Radial Button "Run Current Application" should be selected.
38. Touch "OK [F7]"
39. Touch "Close [F8]"

### VNC and FTP Setup

40. Touch "Exit [F8]"
41. Touch "Password [F1]"
42. The default password is – password
43. Touch "Enter"
44. Touch "Enter [F7]"
45. The screen background should change to the computer desktop.
46. Touch Start on the task bar
47. Settings
48. Control Panel

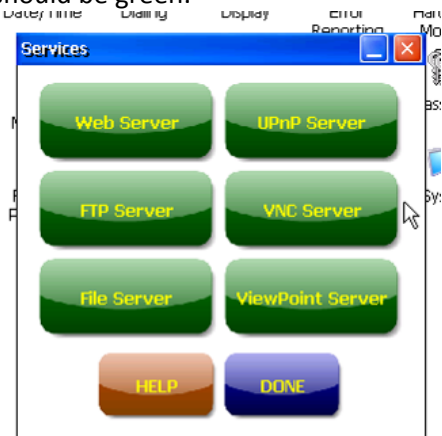
## New PanelView Plus 6 Graphic Terminal Out of Box Setup

49. Double Touch "Services"



50. Select "VNC Server"

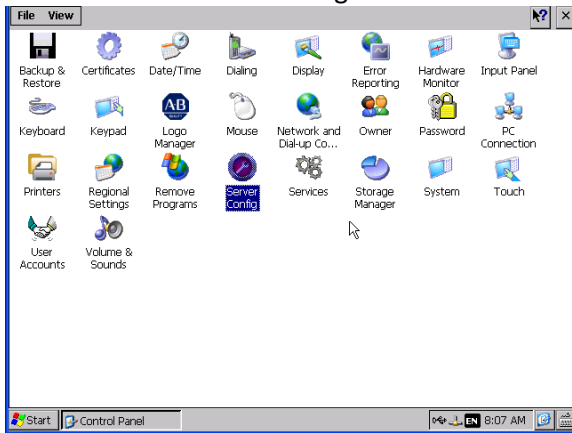
51. The button should change from the color red to green. Note: both VNC Server and FTP Server should be green.



52. Touch "DONE"

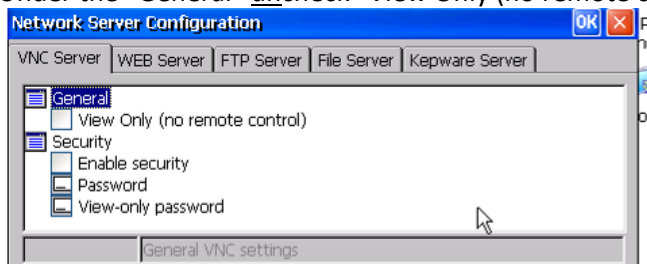
## New PanelView Plus 6 Graphic Terminal Out of Box Setup

### 53. Double Touch “Server Config”

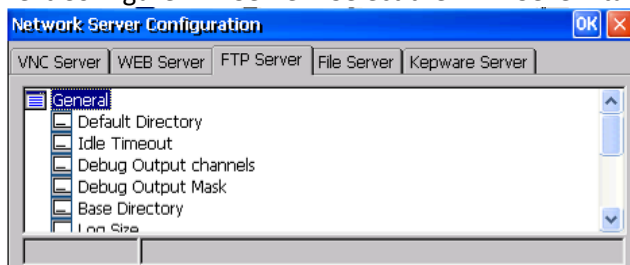


### 54. If not already selected, Select the “VNC Sever” tab

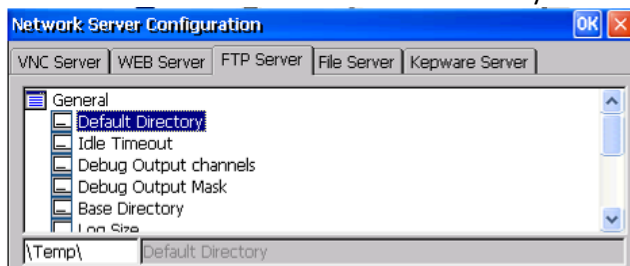
### 55. Under the “General” uncheck “View Only (no remote control)”



### 56. Next Configure FTP Server. Select the “FTP Sever” tab

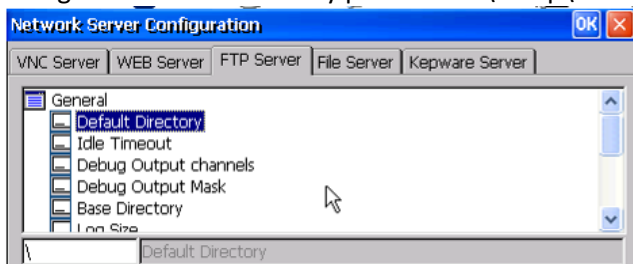


### 57. Under the “General” select “Default Directory”

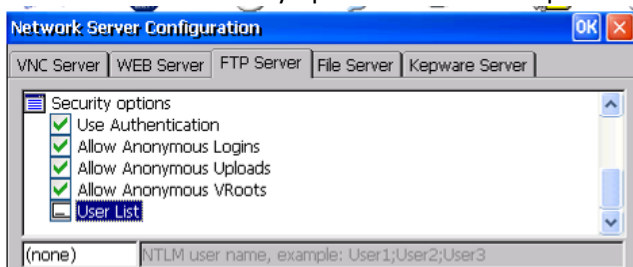


## New PanelView Plus 6 Graphic Terminal Out of Box Setup

58. Change the default directory path from “\Temp\” to “\”



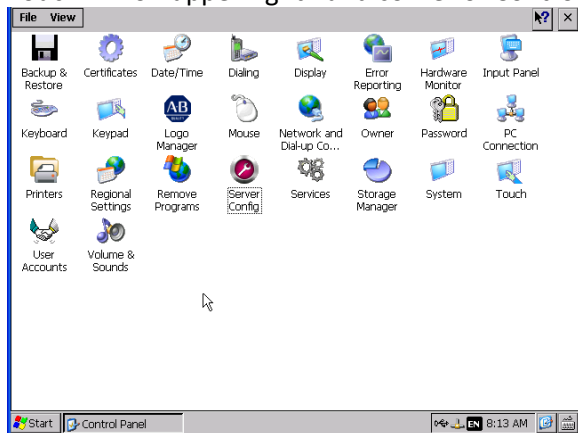
59. Scroll down to “Security options” and check options as shown:



60. Touch “OK” (right upper corner of box)

61. Touch “Yes” to restart services

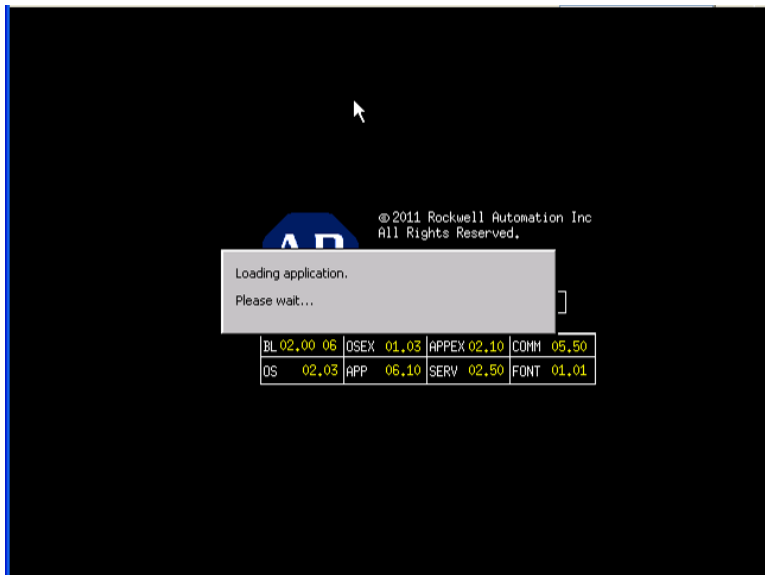
62. Touch “X” on upper right hand corner of Control Panel to close the box



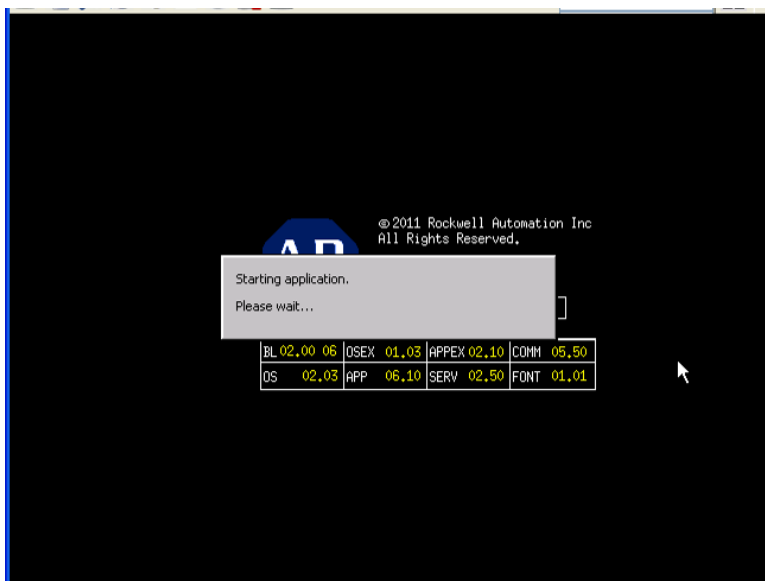
63. Reboot the screen by turning the Power Off and then back On. As the screen boots up, a grey box should appear that reads “Loading application. Please wait...”



## New PanelView Plus 6 Graphic Terminal Out of Box Setup

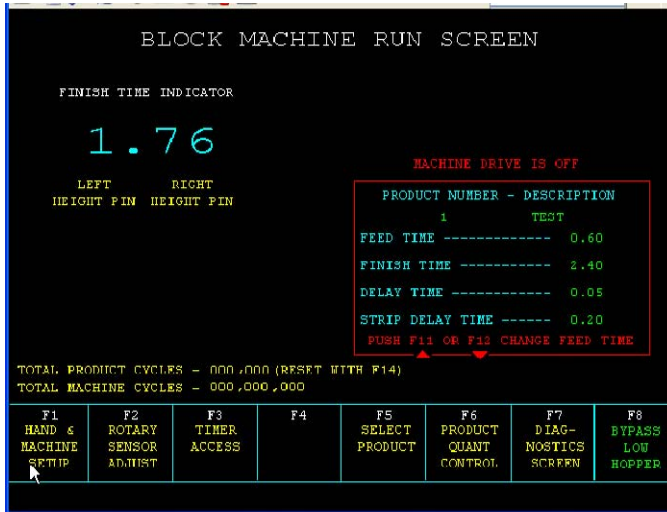


and then "Starting application. Please wait..."



## New PanelView Plus 6 Graphic Terminal Out of Box Setup

64. And then the application should come up running.



65. Note: The SD Card can be left in the slot or removed and stored in a safe place.