

# TUMBLING SYSTEM

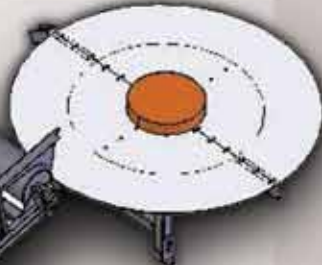
## THE TUMBLING SYSTEM SETS A NEW STANDARD

The innovative engineering of the Tumbling System sets a new standard for tumbling concrete products. The unique rugged design of the tumbler minimizes the cost of tumbling concrete pavers, brick and retaining wall units by reducing the routine maintenance required and providing features to maximize profitability and minimize culls. These design features, which are meticulously engineered, include:

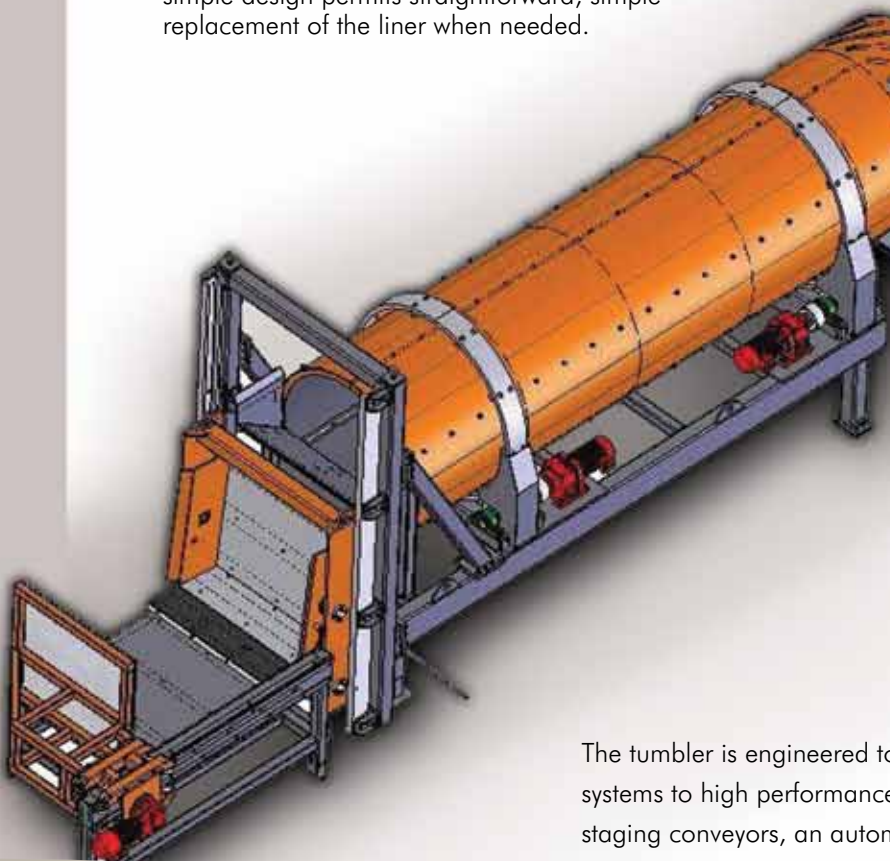
- The tumbler Section Feeding Box (SFB) provides an efficient, cost-effective method to remove sections of concrete products from the storage pallet and gently feed the sections into a tumbler. The cube pusher indexes a single section of concrete pavers, brick or retaining wall units into the feeding box which slowly tips backward and raises to the top of the tumbler. Once at the top the units are gradually fed into the tumbler.
- The spiral steel tumbler drum is submerged arc welded from 3/8" steel for maximum rigidity and roundness, providing a long, dependable life.
- A long-life rubber lining 2" (51 mm) thick is attached to the drum with three hardened steel T-bars. The simple design permits straightforward, simple replacement of the liner when needed.



A long-life rubber lining 2" (51 mm) thick is attached to the drum with three hardened steel T-bars for straightforward, simple replacement when needed.



The Tumbling System gives an aged appearance to concrete pavers, brick and retaining wall units.



- A 24" (610 mm) long hardened steel wearing plate with debris evacuation slots cut at 45 degree angles at the end of the tumbler allows the product to gently fall from the tumbler, reducing breakage as the units fall from the tumbler onto the output conveyor. At the output of the drum, a heavy-duty output conveyor transfers the product onto a product accumulation turntable for manual cubing.
- Manual or automatic product aligning conveyors positioned at ground level convey rows of product to the packaging system.

The tumbler is engineered to permit easy and cost-effective upgrading of basic systems to high performance systems. Upgrades can include automatic cube staging conveyors, an automatic wood pallet accumulation system, manual or automatic product aligning conveyors and three cuber styles: overhead clamp, slider plate or robotic arm.

The logo for BESSER, featuring the word "BESSER" in a bold, blue, sans-serif font. The letters are slightly italicized and have a yellow swoosh underline that starts under the 'B' and ends under the 'R'.

## Standard Features

- Entry-level tumbler Section Feeding Box (SFB)
- Spiral welded 3/8" thick steel tumbler drum
- Tumbler lined with durable 2" thick rubber
- 4-12 rpm tumbler speed adjustment
- Heavy-duty output conveyor
- Product accumulation turntable for manual cubing

## Optional Enhancements

- Feeding system cube accumulation conveyors
- Feeding system automatic empty pallet accumulator
- Manual or automatic product aligning conveyors
- Choice of three cuber styles: overhead clamp, slider plate or robotic arm

## Specifications

### Dimensions (entry-level system)

- Width: 6' 9" (2057 mm)
- Height: 11' 9" (3581 mm)
- Length: 54' 5" (16,586 mm)
- Weight: 38,000 lbs. (37,237 kg)

### Hydraulic Requirements

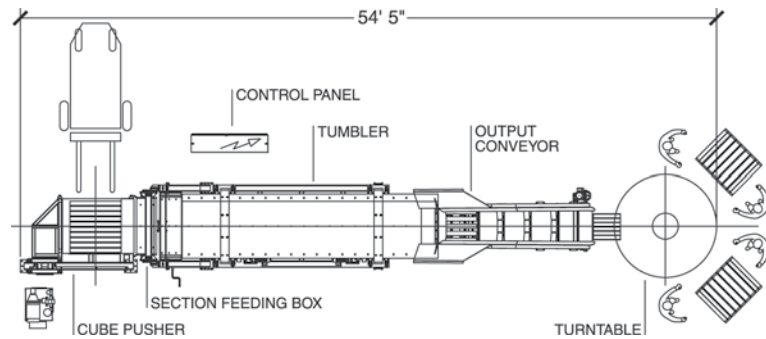
- 20 gallons (75.7 liters) per minute
- Hydraulic oil at 1500 psi (peak)

### Voltage

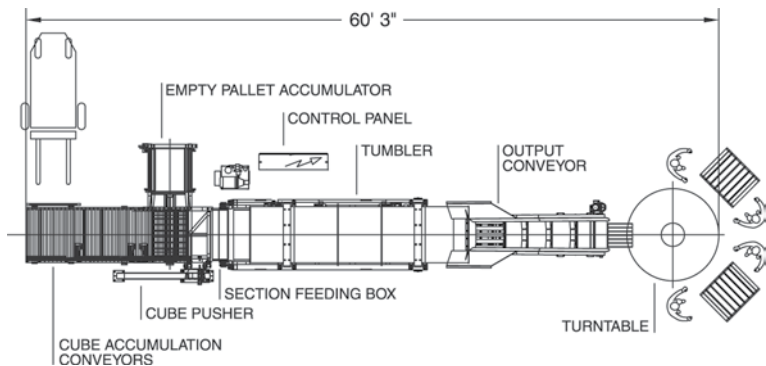
- 460 V., 3 phase, 60 Hertz  
(other voltages available)



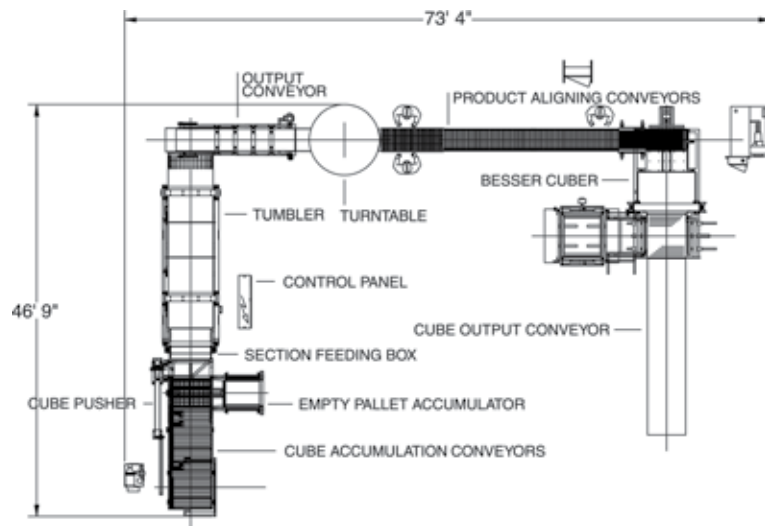
801 Johnson Street  
Alpena, Michigan 49707 USA  
phone: 800.530.9991/989.354.4111  
fax: 989.354.3120  
besser.com  
e-mail: sales@besser.com



Layout 1: Entry-level system



Layout 2: Entry-level system with optional feeding system enhancements



Layout 3: Complete system with Besser cuber

Patent Pending

For better viewing, all guards, safety devices and signs are not necessarily shown. Some of the equipment shown or described throughout this brochure is available at extra cost. Since the time of printing, some of the information in this brochure may have been updated; ask your Besser sales representative for details.

Besser Company reserves the right to change or improve product design and specifications without prior notice.