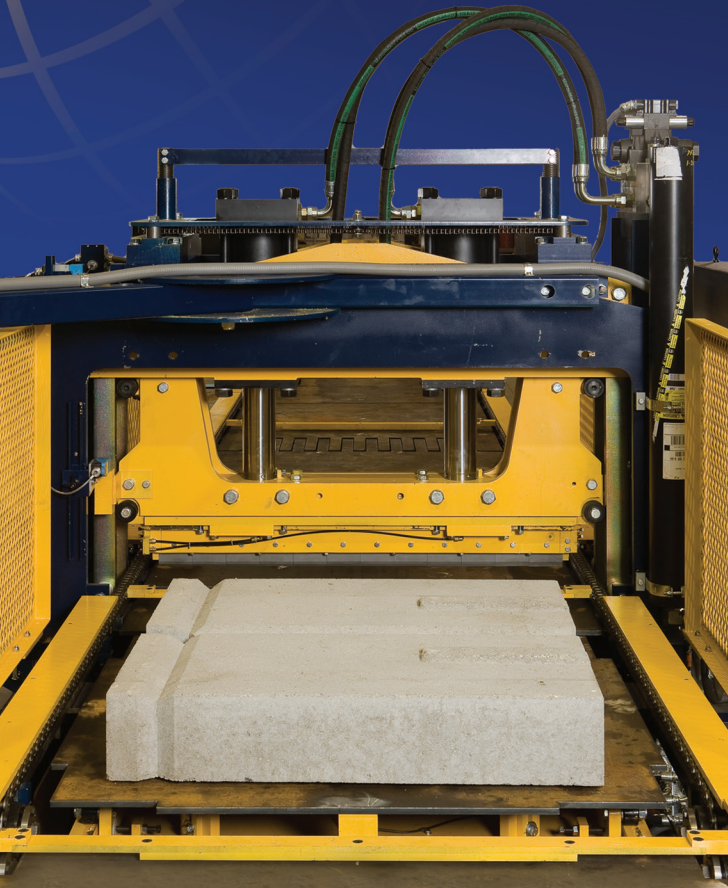


S140 BIG BOARD SPLITTER

Ultimate Splitting Flexibility



The S140 can split standard, architectural and retaining wall products ranging from 1-5/8" (41 mm) slabs to 12" (305 mm) high units up to 52" (1320 mm) wide

The S140 is designed to efficiently handle the output of big board machines. It splits a wide range of product sizes a board at a time, delivering single or multiple splits. This is possible because the splitter progressively splits product, in the same pattern in which they are made, as they travel beneath the blades. This eliminates the need for additional equipment and time to reconfigure the units prior to splitting.

Many products popular today require splits on two sides/faces of the units. By incorporating an optional turntable feature into the S140 this is simple to accomplish. When product requires two splits the complete tier of units is split one direction before the conveyor reverses, the product is rotated 90° and fed back through the splitter.

The ability to split an entire pallet of product in one cycle adds flexibility to your operation. Splitting units on multiple faces opens up new possibilities for unique and attractive product designs that will appeal to your marketplace.

Like all Besser splitters this machine features few mechanical adjustments, easy clean up and simple routine maintenance.

STANDARD FEATURES

- Hard stops on both upper and lower blades assure consistent penetration and split quality
- Dual 8" (203 mm) bore, 12" (305 mm) stroke splitting cylinders provide greater splitting force
- Top and bottom segmented carbide tipped blades
- Quick change slide in blade sets
- The upper head float is infinitely adjustable using a simple air regulator for varying product requirements
- Rugged 1.25" (32 mm) steel plate frame
- Load station allows placement of one tier of product up to 52" x 52" (1320 mm x 1320 mm) onto the bar conveyor
- The bar conveyor is proportional hydraulic with encoder feedback



The S140 creates precise, beautiful splits

Operation of the S140 is simple, making splitting massive units like this easy

- Outboard actuators located at operator level for easy maintenance
- An end station with shift table discharges one tier from the conveyor to the clamp pick-up station
- Dual 2.5 gallon (9.5 l) hydraulic accumulators
- Control panel with Allen-Bradley or Siemens S7 control platform

OPTIONAL ENHANCEMENTS

- Extended bar conveyor for splitter load station with multiple bays
- Turntable plate for rotating product for second split direction during cycle
- Waste drop station includes drop chute and belt transfer conveyor under table
- Multiple transfer bar conveyor, variable frequency driven, with single bay for inspection
- Dual 30 gpm/30 hp (114 lpm/22 kw) high pressure power unit, variable volume pumping units on 200 gallon (757 l) tank
- Side aligners
- T-Split blade package
- Servo-driven bar conveyor

SPECIFICATIONS

Production Rate*

- Varies per product, up to 12 splits/minute (assuming 4 seconds/split)

Product Capacity

Splits standard block, architectural units and retaining wall units

- Width: Up to 52" wide (1320 mm)
- Height: 1-5/8" - 12" high (41 mm - 305 mm)

Hydraulic Requirements

- 60 gallon (227 l) per minute peak consumption at 1500 psi (103 bar)

Pneumatic Requirements

- 80 psi continuous, no consumption

Voltage (other voltages available)

- Power: 480 V, 3 phase, 60 Hz
- Control: 24 VDC

Dimensions/Weight

- Length: 9' (2743 mm)
- Width: 8' 6" (2591 mm)
- Height: 8' (2438 mm)

*Rate will vary depending upon product sizes being split

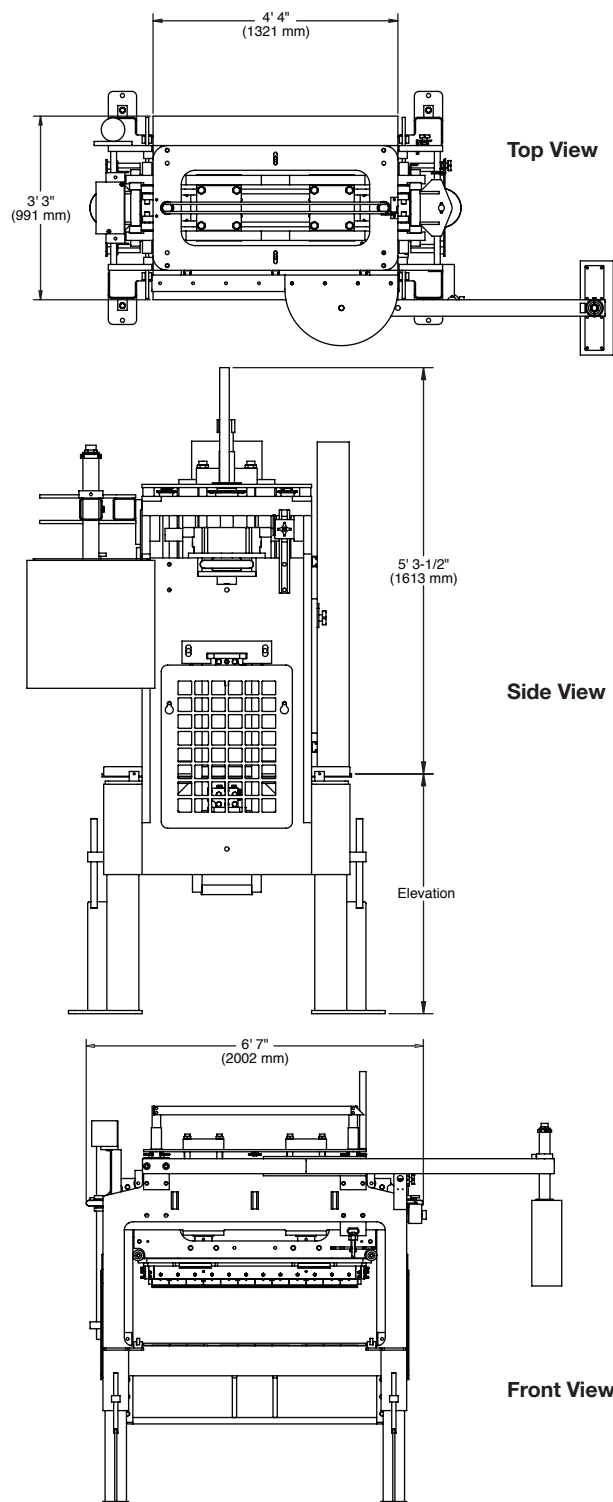


801 Johnson Street
Alpena, Michigan 49707 USA
+1.989.354.4111 sales@besser.com

besser.com



Smaller scale retaining wall units can also be split by the S140



For better viewing, all guards, safety devices and signs are not necessarily shown. Some of the equipment shown or described throughout this brochure is available at extra cost. Besser Company reserves the right to change or improve product design and specifications without prior notice. Since the time of printing, some of the information in this brochure may have been updated, ask your Besser sales representative for details.