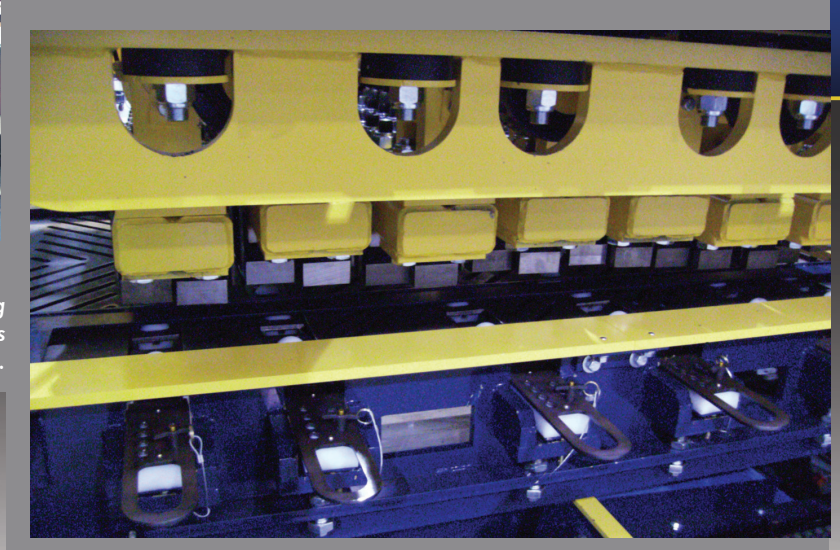


STONE AGING MACHINE (SAM)

Inline Paving Stone Aging



The process table has three product tilting zones. Elevated wheels raise the four sides and corners of the pavers for aging.



The Stone Aging Machine (SAM) gives concrete paving stone an aged appearance. The SAM utilizes product tilting zones and oscillating heads that propel loose-fitting impactors against the pavers. Impacting is totally random and is adjustable so that different aged looks can be achieved. The SAM is versatile and can be used inline or out-of-line.

STANDARD FEATURES

- Bar conveyor with lift table load station for feeding paving stone one tier at-a-time into the SAM
- Four oscillating heads for creating a complete aged appearance
- Wear plates with debris slots
- Hydraulically adjustable head height
- Debris removing brush for top of product
- Waste drop conveyor underneath SAM - 18" (46 cm) wide by 18' long (5.5 m)
- Allen-Bradley or Siemens controls and switches

Discharge Station

- Bar conveyor with shift plate for discharging one tier
- Single bay for product inspection
- End station with shift plate table for unloading to overhead clamp

Acoustic Enclosure System

Dust Collection System

Note: Includes duct work up to a maximum of 100' (30.5 m) in total length

Single Power Unit

Incline Waste Takeaway Conveyor

- Inclined slider bed belt conveyor with cleats to carry waste from below the dropout section to a lugger, (not included). Drive is included.
- Conveyor is 24" wide (61 mm) and 13' (4 m) long

OPTIONAL ENHANCEMENTS

- CE Compliance - includes electrical filters, shielded cable and terminal strips
- Additional sets of product tilting bars

Note: Two sets of adjustable product tilting bars are included in the standard base machine

SPECIFICATIONS

- Maximum Cube Dimensions: 48" (1200 mm) x 48" (1200 mm) x 2-3/8" (60 mm)

Hydraulic Requirements

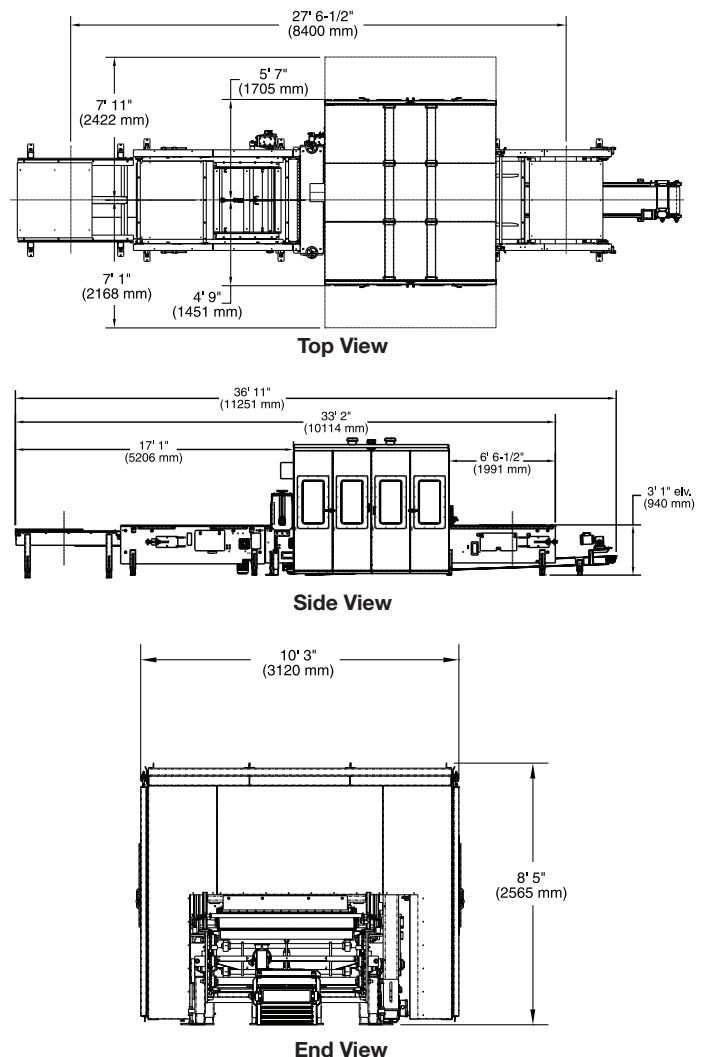
- 750 psi (52 bar) @ 15 gallons (57 liters)/minute

Voltage

- 480 V, 3 phase, 60 Hz (standard)
- 230/3/60, 380/3/60, 575/3/60 or 50 Hz (optional)

Weight

- Estimated 16,000 lbs (7257 kg)



801 Johnson Street
Alpena, Michigan 49707 USA
+1.989.354.4111 sales@besser.com
besser.com

For better viewing, all guards, safety devices and signs are not necessarily shown. Some of the equipment shown or described throughout this brochure is available at extra cost. Besser Company reserves the right to change or improve product design and specifications without prior notice. Since the time of printing, some of the information in this brochure may have been updated, ask your Besser sales representative for details.