

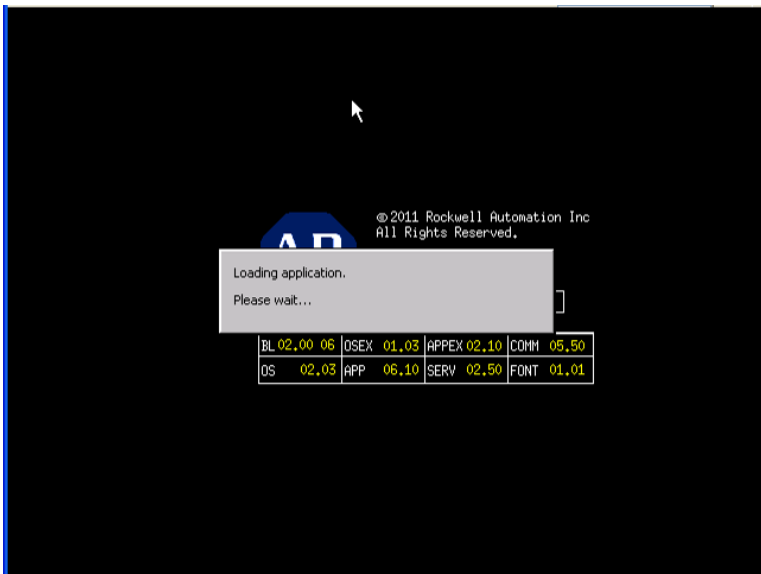
Load Existing PanelView Plus 6 Graphic Terminal with new Application



How do you know if you have a PanelView Plus or a Panelview Plus 6? The quickest way is to look at the type of memory slot the unit has on the back. If it accepts an 'SD Card', it is a PanelView Plus 6. If it accepts a 'Compact Flash Card', it is a PanelView Plus or VersaView (refer to Service Bulletin 2006-01).

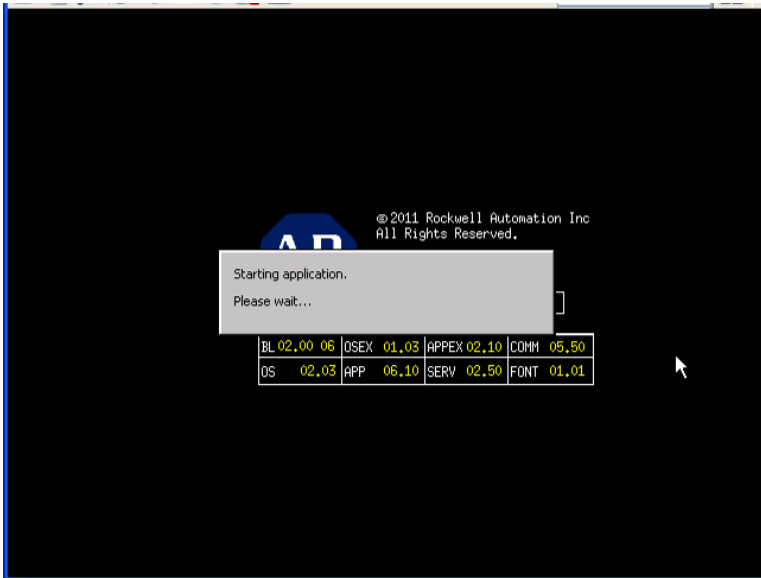
To determine firmware, just watch the unit boot up. In the box labeled APP you will find the firmware version, ie 06.10. For this procedure, you want Firmware 6.10 or later loaded on a PanelView Plus 6.

1. Reboot the screen by turning the Power Off and then back On. As the screen boots up, a grey box should appear that reads "Loading application. Please wait..."

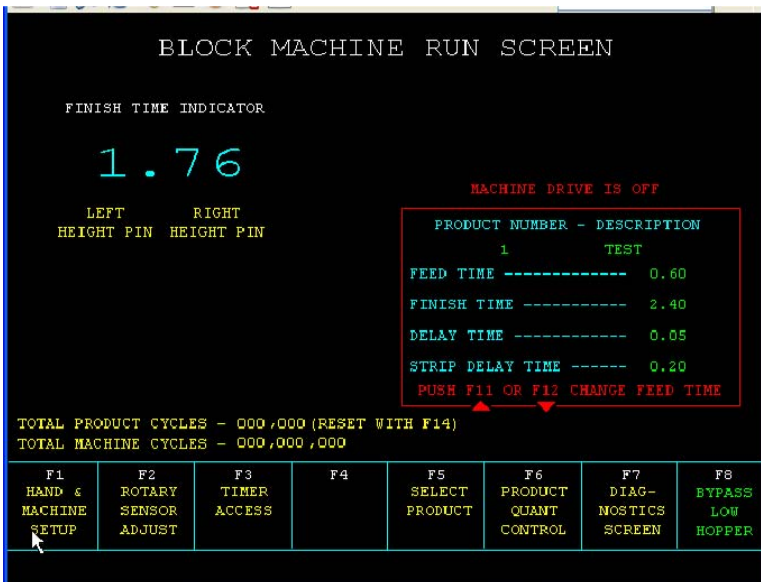


and then "Starting application. Please wait..."

Load Existing PanelView Plus 6 Graphic Terminal with new Application

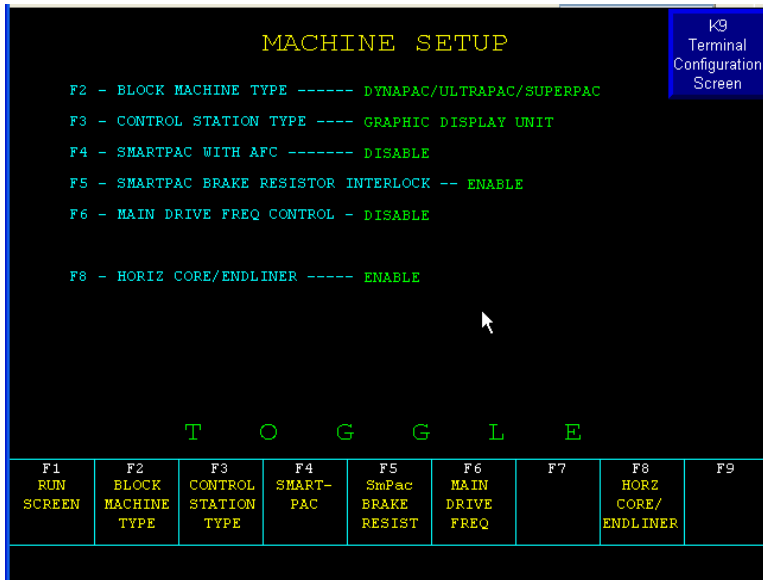


2. And then the application launches to the Main Screen.

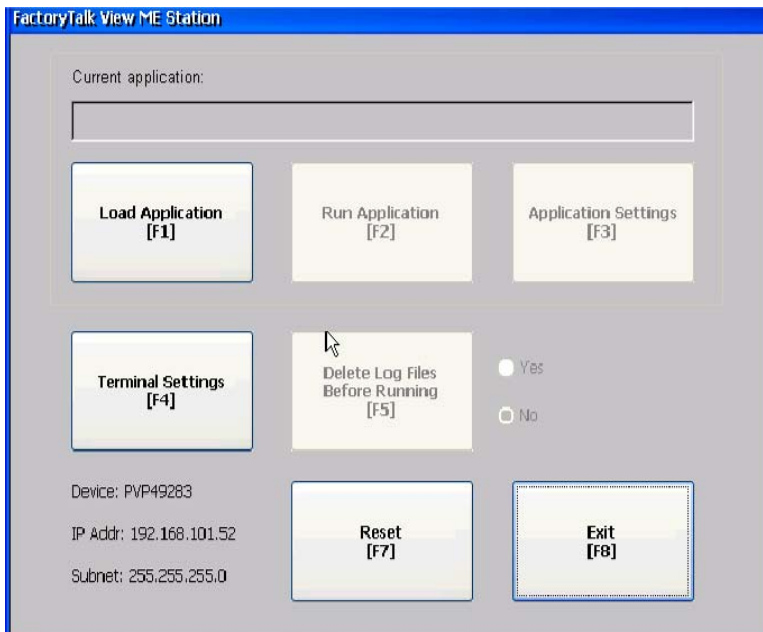


Load Existing PanelView Plus 6 Graphic Terminal with new Application

- For a PV Plus 1000, Press K16, or for a PV Plus 1250, Press K20, key on Display Bezel to view "Machine Setup Screen".

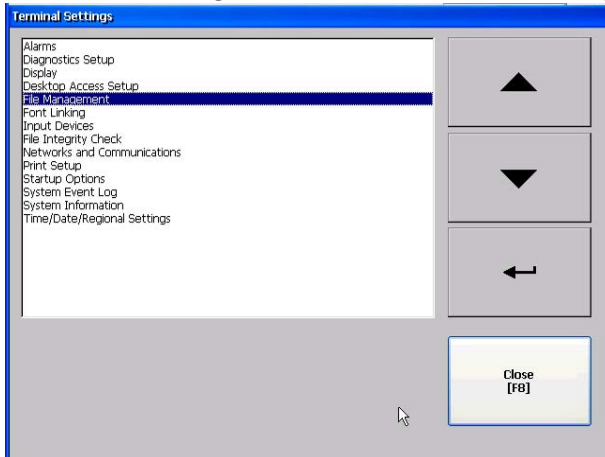


- Touch "K9 Terminal Configuration Screen" to shutdown the project and launch FactoryTalk View ME Station, the Configuration mode of the terminal.

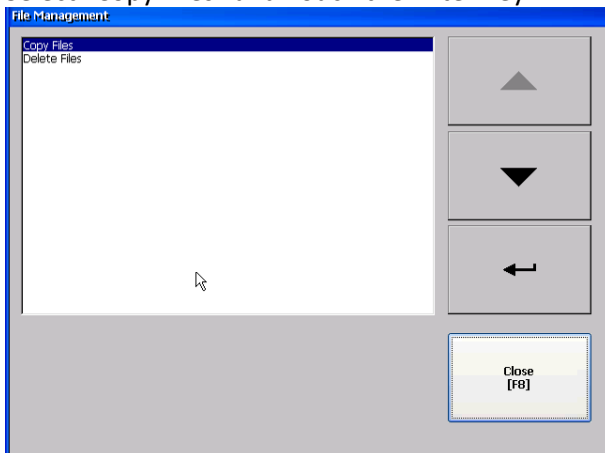


Load Existing PanelView Plus 6 Graphic Terminal with new Application

5. Insert Secure Digital (SD) card (01659-000017) into SD slot that is hot-swappable on the back of the display unit.
6. Next, Touch “Terminal Settings (F4)”
7. Select “File Management” and Touch the Enter Key

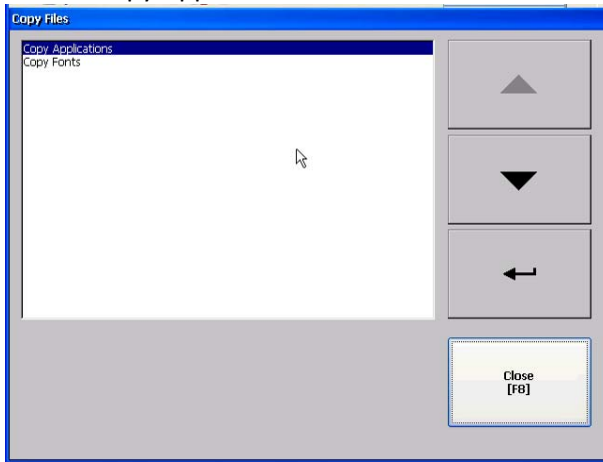


8. Select “Copy Files” and Touch the Enter Key

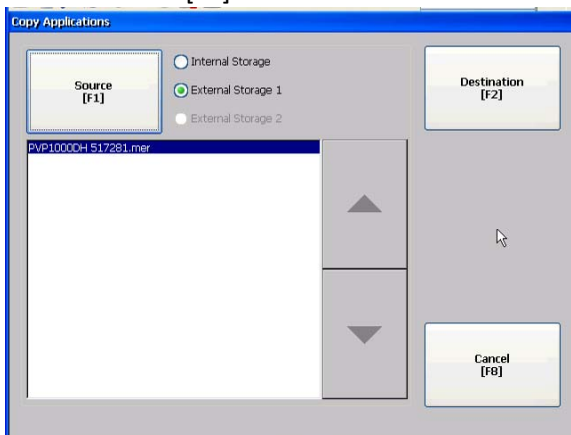


Load Existing PanelView Plus 6 Graphic Terminal with new Application

9. Select “Copy Applications” and Touch the Enter Key



10. Touch “Source [F1]” to select radial button “External Storage 1”

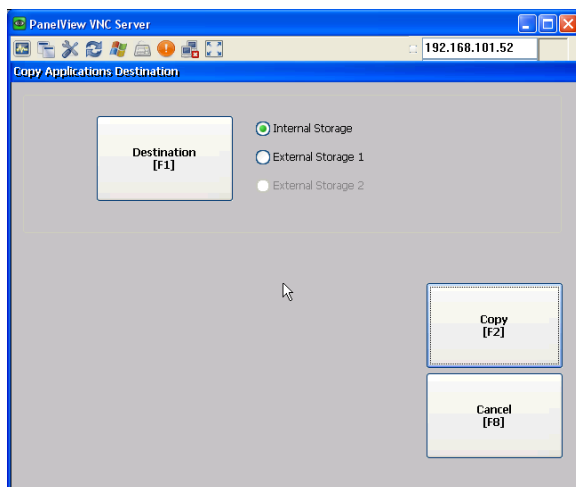


Then, highlight the mer file to be copied from the “External Storage 1”. (If the mer file was not copied onto the SD Card into the proper directory, it will not show up for selection. As an example assuming the application file is 517281.mer is already copied to the SD Card, when viewing the card on a regular computer with windows explorer, you would see (assuming the SD card is mapped to E drive):

E:\Rockwell Software\RSViewME\Runtime\517281.mer

Load Existing PanelView Plus 6 Graphic Terminal with new Application

11. Touch "Destination [F2]"




12. The radial button for "Internal Storage" should already be selected.
13. Touch "Copy [F2]" to copy the file from the "External storage 1" to the "Internal Storage" location.

If the file already exists, a message will display "The file '\Application Data\Rockwell Software\RsViewME\Runtime\filename.mer' already exists. Overwrite?" - Touch "Yes [F7]"

14. Touch "Cancel [F8]"
15. Touch "Close [F8]"
16. Touch "Close [F8]"
17. Touch "Close [F8]"
18. Touch "Load Application [F1]"
The radial button for "Internal Storage" should already be selected. If not, then select "Internal Storage."
19. Highlight the internal mer application file that you want to load.
20. Touch "Load [F2]"
21. Question is displayed, "Do you want to replace the terminal's current communication configuration with the application's communication configuration?"
Touch "Yes [F7]"
22. Touch "Terminal Settings [F4]"

Load Existing PanelView Plus 6 Graphic Terminal with new Application

23. Arrow Down to "Startup Options" and Touch the Enter Key 
24. Touch "On Startup [F1]". Radial Button "Run Current Application" should be selected. If not, then select "Run Current Application."
25. Touch "OK [F7]"
26. Touch "Close [F8]"
27. Touch "Reset [F7]"
28. Question is displayed, "Do you want to reset the terminal?"
Touch "Yes [F7]"
29. As the screen resets, a grey box should appear that reads "Uploading Project. Please Wait..."
30. The screen will then reboot. Then, a grey box should appear that reads "Loading Application. Please wait..." and then "Starting application. Please wait..."
31. Note: The SD Card can be left in the slot or removed and stored in a safe place.