

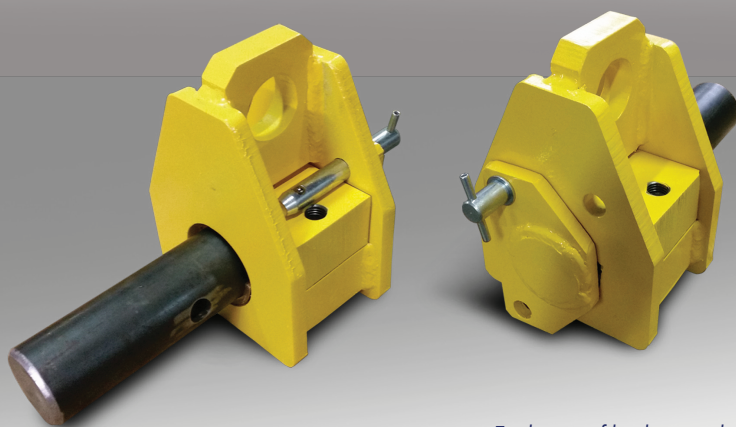
# FORM ROLL-OVER BRAKE

## Simplify Stripping

The Form Roll-Over Brake rolls over any precast form poured with a bottom. The brake speeds up the stripping process as the brake is used to turn the form 180 degrees at a controlled rate of speed. Plant personnel determine the brake's level of resistance for each form to provide the optimum level of safety and efficiency when stripping.

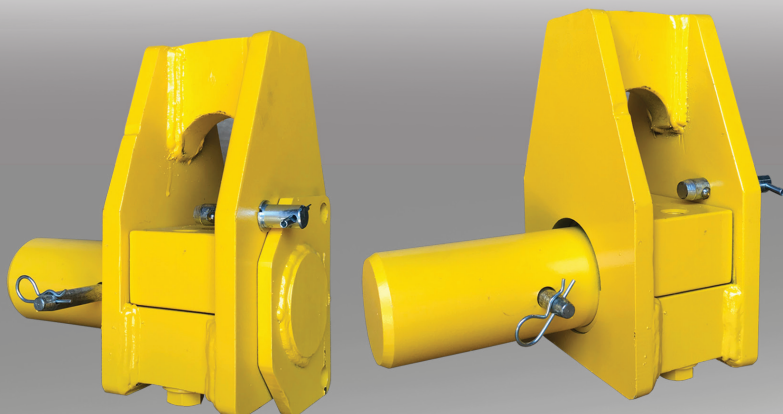
Two models are available. The standard brakes handles forms up to 10 tons, the heavy-duty brake handles forms up to 25 tons.

## Standard Brake



*Each pair of brakes can handle forms weighing up to 10 tons (standard brake) or 25 tons (heavy-duty brake). Brakes are simple to install making it easy to share between forms as needed.*

## Heavy-Duty Brake



## Features:

- Strip forms faster
- Improve plant safety
- Eliminate dangerous swinging of forms



*The new brake device reduces the dangerous swinging motion by 85 - 90% when the form is rolled over.*