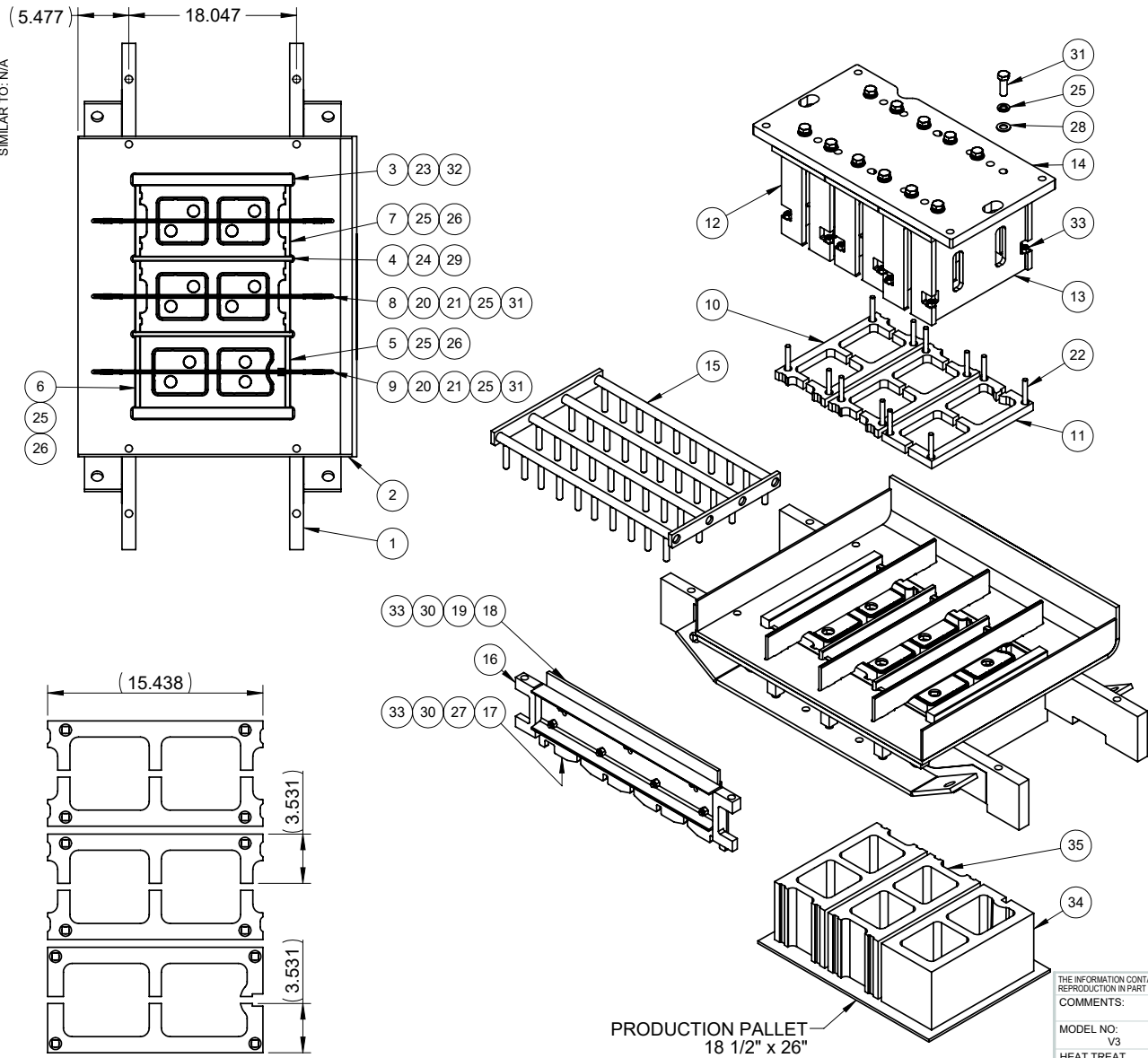


SIMILAR TO: N/A



ITEM	QTY.	PART NUMBER	DESCRIPTION
1	2	017524	SIDE BAR
2	1	017777	MOLD TOP PLATE
3	2	055312	OUTSIDE DIVISION PLATE
4	2	443074	INSIDE DIVISION PLATE - 7.625W X 15.625L UNIT
5	1	017712J0090	STEEL SASH LINER - 7.625 W. X 7.625 H. UNIT
6	1	017712	PLAIN END LINER
7	4	043986	END LINER
8	2	251207J0010	CORE ASSEMBLY
9	1	318625	CORE ASSEMBLY
10	4	239503J0140	STRIPPER SHOE
11	2	02-270584J2640	STRIPPER SHOE
12	2	043992	PLUNGER
13	1	020705	PLUNGER
14	1	024901	STRIPPER HEAD PLATE
15	1	058894	AGITATOR SUB
16	1	02-346132	CUT OFF BAR SUB-ASS'Y
17	1	346133	CUTOFF SHOE
18	1	017166	WIPER RUBBER
19	1	346134	WIPER FRAME
20	6	014129	HOLDING LINK
21	6	QI400	RIVET 5/8"DIA. x 1 1/2" LG.
22	12	02-378484	STRIPPER SHOE BOLT 1/2"-13NC x 4" LG.
23	4	01233-000064	WASHER, INTERNAL TOOTH 1.500 ZINC
24	4	01233-000089	WASHER, SPLIT LOCK .500 ZINC
25	24	01233-000093	WASHER, SPLIT LOCK .750 ZINC
26	6	01223-100117	SCREW, HEX HEAD CAP .750-10 X 1.625 GR5 ZINC
27	4	01235-000005	WASHER, FLAT HARDENED .500 YELLOW ZINC
28	12	01235-000008	WASHER, FLAT HARDENED .750 YELLOW ZINC
29	4	01223-100075	SCREW, HEX HEAD CAP .500-20 X 1.250 GR5 ZINC
30	7	01223-100056	SCREW, HEX HEAD CAP .500-13 X 1.750 GR5 ZINC
31	18	01223-100121	SCREW, HEX HEAD CAP .750-10 X 2.250 GR5 ZINC
32	4	01211-000081	NUT, STANDARD HEX 1.500-6 GR A ZINC
33	19	01217-000065	NUT, NYLOC .500-13 GR8 ZINC
34	1	02-353094	CONCRETE UNIT - 7.625W X 7.625H X 15.563L
35	2	251205	CONCRETE UNIT - OEBE/HHCTO

MOLD HEIGHT: 8 1/4"  
 VIBRATOR C/C: 20.047"  
 UNITS# 02-251205 &  
 02-353094

THE INFORMATION CONTAINED IN THIS DRAWING IS THE SOLE PROPERTY OF THE BESSER COMPANY. REPRODUCTION IN PART OR WHOLE WITHOUT WRITTEN PERMISSION FROM BESSER IS PROHIBITED.				ESCORP REV. #
COMMENTS:				
MODEL NO: V3	NEXT ASSY: N/A	DRAWING LEVEL: N/A		
HEAT TREAT CODE: N/A	SURFACE COAT CODE: N/A	WEIGHT: 1389.7 LBS.		
TOLERANCE UNLESS OTHERWISE SPECIFIED: DECIMAL: .XXXX" = ±.0005" .XXX" = ±.015" .XX" = ±.06" .X" = ±.1" ANGULAR=±1° FRACTIONAL: ±1/16" HOLE LAYOUT ±1/32"		DRAWN: YF	DATE 4/7/2020	
REV.	DESCRIPTION	APPD.	DATE	SCALE: 1:12

**BESSER**

MOLD ATT'N TO PRODUCE A 7.625W X 7.625H X 15.625L, 2 CORE UNITS, OEBE IN TWO COMPARTMENTS, PPOE-SSOE (BUBBLE) IN ONE COMPARTMENT

SIZE DWG. NO. SHEET 1 OF 1 REV.  
**B 02-732619**

PRODUCTION PALLET  
 18 1/2" x 26"