

CAGE EXPANDERS

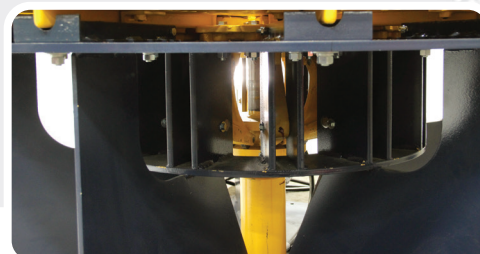
Strong • Versatile • Easy Setup



CREATE ROUND CAGES WITHOUT FLAT SPOTS

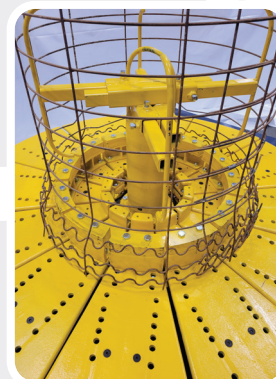
The Cage Expander is versatile and can be used for either horizontal or vertical installation depending upon producer preference. Strategically located forming block guides provide stability during operation.

Bells of varying heights can be formed up to 8" larger than the pipe barrel diameter. The Expander can be outfitted with an adjustable cage centering device which prevents the cage barrel from moving while the bell is being formed.



EASY FOR PLANT PERSONNEL TO SET-UP AND OPERATE

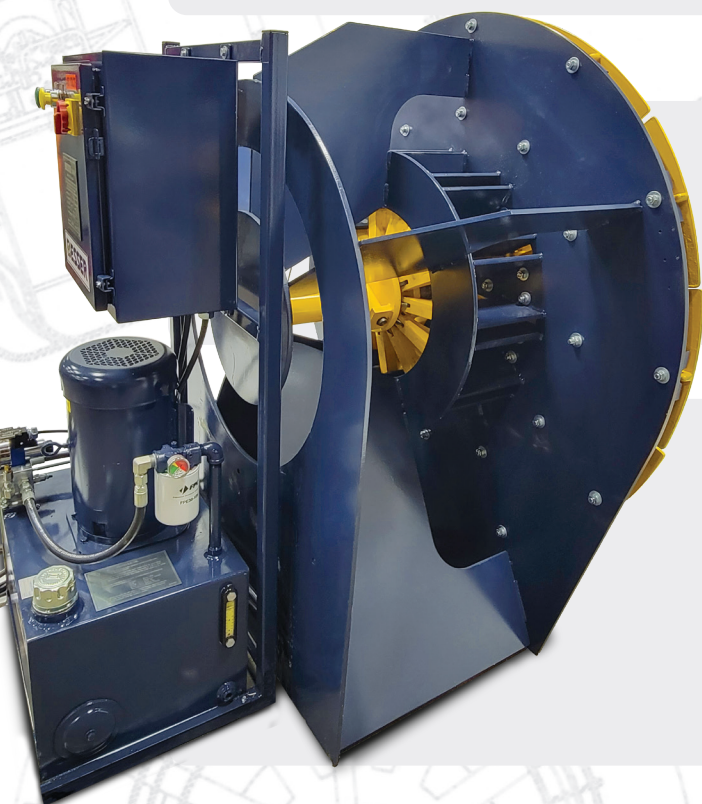
Plant staff use a foot switch to activate the cycle. Multiple safety stops are provided for employee protection.



TWO SIZES:

- 8"–36" (200–900 mm)
- 12"–48" (300–1200 mm)
- A custom larger device, with a range from 42"–72" (1050–1800 mm) is available upon request which differs in design from the other two models.

Equivalent metric sizes are available for all models.

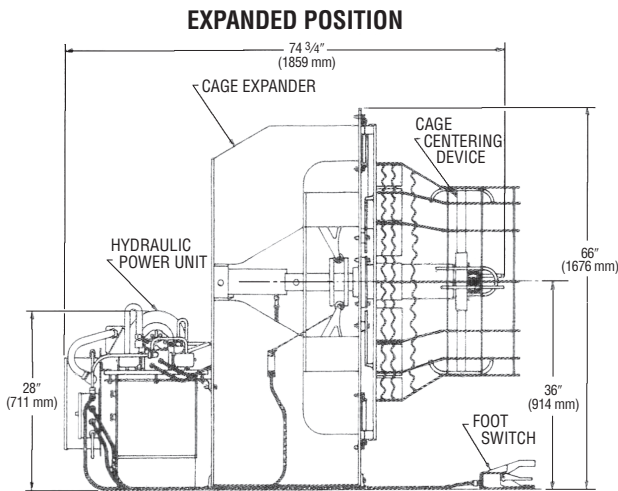


CAGE EXPANDERS

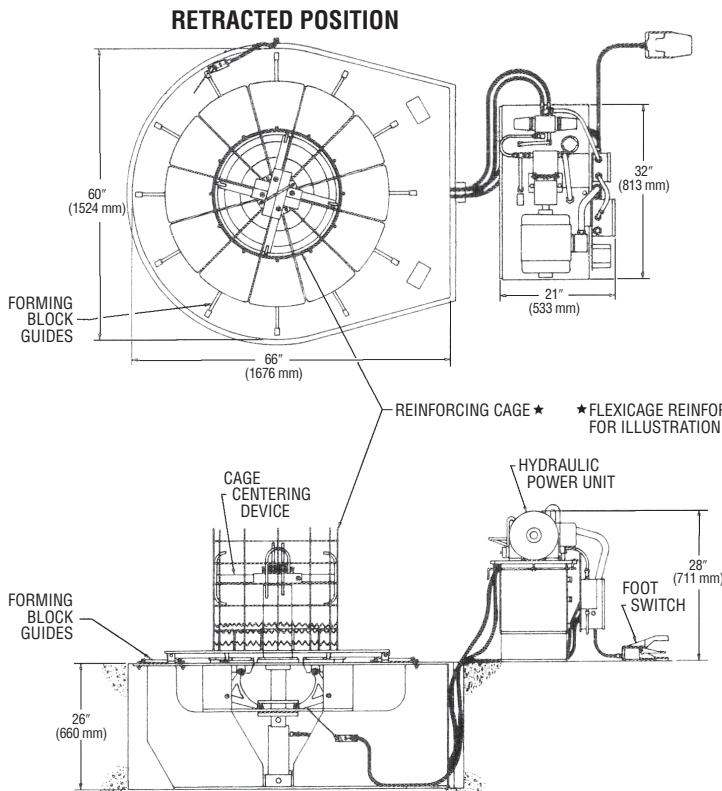
Strong • Versatile • Easy Setup

SPECIFICATIONS

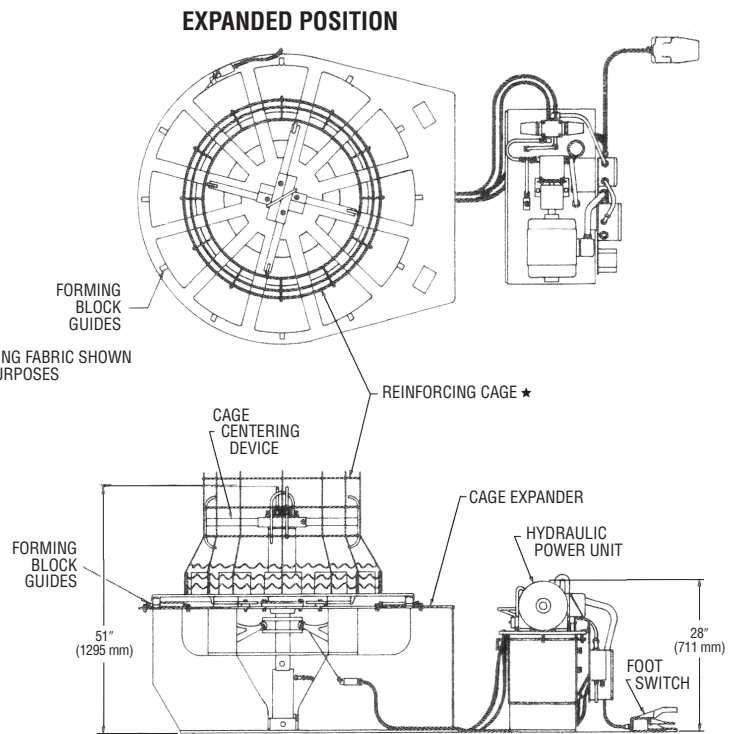
MODELS	CE-836 VH	CE-1248 VH
Range	8"–36" (200–900 mm)	12"–48" (300–1200 mm)
Expansion Range	8"–36" (200–900 mm)	12"–48" (300–1200 mm)
Overall Height (including Cage Centering Device)	51" (1295 mm)	51" (1295 mm)
Table Height	26" (660 mm)	26" (660 mm)
Table Diameter	60" (1524 mm)	60" (1524 mm)
Hydraulic Power Unit Capacity	5 gpm 19 l/m	5 gpm 19 l/m
Hydraulic Power Unit Horsepower	7.5 hp	7.5 hp
Hydraulic Tank Size	20 gal (76 l)	20 gal (76 l)
Standard Electrical Requirements	230V/60Hz/3PH 460V/60Hz/3PH or 230V/50Hz/3PH 460V/50Hz/3PH	230V/60Hz/3PH 460V/60Hz/3PH or 230V/50Hz/3PH 460V/50Hz/3PH
Weight (including Hydraulic Tank)	3,000 lbs (1361 kg)	3,200 lbs (1415 kg)



HORIZONTAL INSTALLATION



BELOW FLOOR INSTALLATION



FLOOR INSTALLATION